

成品尺寸：75\*105MM  
正反单色印刷128g铜版纸

### Warm Tips

1. Please keep this manual in a safe and conspicuous place for easy reference when needed.
2. If you meet any problems when using the product, please contact us so that we can provide you with friendly after-sales support.

After Sale Support E-mail: wl01service@outlook.com

### HDMI Wireless Extender

## USER MANUAL

### 1.Specifications

Parameter	Description	
Video	Standard HDMI	HDMI 1.3 , HDCP1.2
	Pixel bandwidth	165MHz, digital signals
	Interface bandwidth	HDMI total bandwidth:6.75Gbps
	Max resolution	1920*1080@60Hz
	Interface type	HDMI-A
	Wi-Fi	802.11A/N , 5GHz
	Distance	≤30m (Open environment) ,Best use within 10m
Other	Power	Adapter:DC 5V
	Power dissipation	MAX 2W
	Temperature	Operating: -5°C ~ +70°C
	Humidity	Operating: 5% ~ 90%
	The warranty	1 year free warranty

### 2.Package list



①



②



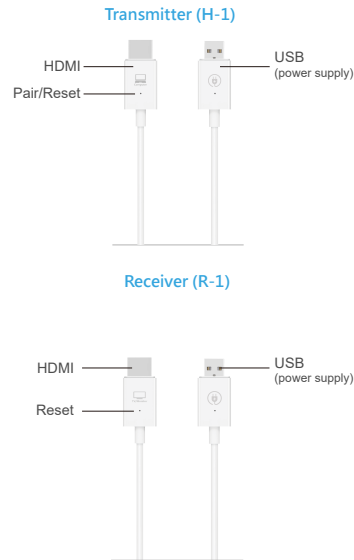
③



④

① HDMI Wireless Transmitter	1pcs
② HDMI Wireless Receiver	1pcs
③ User Manual	1 pcs
④ Warranty Card	1pcs

### 3.Interface specification



#### 4.How to install

1. Connect the receiver HDMI and TV, and connect the powered USB port (5V/1A)
2. Connect the transmitter HDMI and signal source, and connect the powered USB port (5V/1A), wait for a few seconds and then the lights will stop flashing, and the screen will be mirrored automatically.

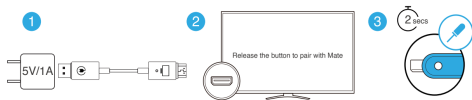


#### 5.Matching setting

**Attention: When the Wireless HDMI Extender cannot match, please do the following.**

##### 1 Enable receiver pairing mode

1. Plug the USB end of the receiver (5V-1A) into the power source.
2. Connect the HDMI end of the receiver to your monitor.
3. Poke the "Reset" hole on the HDMI side of the receiver for 2 seconds until "Release the button to pair with Mate" appears on the screen. Then release the button.
4. If you want to restore factory settings, press and hold the "Reset" hole for 10 seconds.



#### 2 Press pair button on the transmitter

1. Connect the transmitter to the computer and ensure it's powered.
2. Wait for the display to show "Ready to pair", then use a pin to press and hold the HDMI Reset hole for 5 seconds until the light goes off to complete pairing.



#### 6.Troubleshooting

**1.Overheat** - The normal working temperature range of this product is : 23°F~158°F(-5°C ~ +70°C). If you feel that the product is heating up during using, but it is normal during the operation of the product, please do not worry.

**2.Lagging and Unplayable** - Please make sure the product is connected to 5V/1A power supply, no power supply or insufficient power supply will cause the device can't play normally or lagging. Meanwhile you can refer to the connection/pairing steps in the manual whether you are using the product correctly.

#### 7.Warranty

Thank you for using this product. In order to protect your rights, please read the following protection terms carefully:

We provide a 1-year warranty and lifetime maintenance after-sales service for this product. During the one-year warranty period from the time of purchase, the company will provide customers with free maintenance services due to hardware failures caused by the quality of the product itself.

Please keep the user manual in a place where safety and easy to find so that you can read it immediately when meet problems.  
safety instruction:

##### ▲ Safety instruction

- Please do not disassemble this product by yourself because it doesn't including DIY function;
- Please don't make the product touch water in case damaged, because it is Not waterproof design;
- Please use dry cloth material when clean the product surface;
- Please do not use this product in environments that are too humid or too hot;
- Please avoid contact with corrosive substances.
- When there is damage or other physical damage to the product, please stop using and contact with customer service to get support.